

NT3000PLUS

Innovation with medical technologies

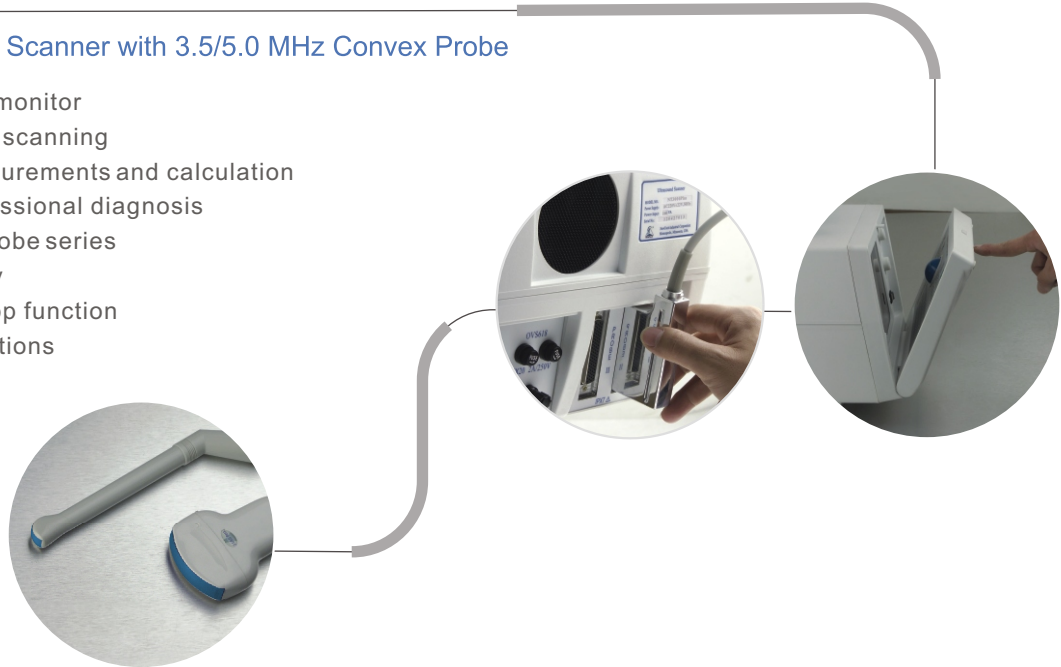


NewTech®

NT3000PLUS

Portable Ultrasound Scanner with 3.5/5.0 MHz Convex Probe

- 9" large CRT B/W monitor
- Convex and linear scanning
- Full range of measurements and calculation functions for professional diagnosis
- Dual-frequency probe series
- High image quality
- 128-frame cine loop function
- Two probe connections



Specifications:

Display Mode	B, B+B, B+M, M		
Gray Scale	256 grade		
Monitor	9" B/W CRT monitor		
Image Processing	Pre-processing, r line calibration		
Focusing Method	Dynamic focusing with variable aperture		
Application	Abdomen, OBS/ GYN, Urology, Cardiology and small body parts		
Measurement	Multiple measurements of Distance, Circumference, Area, Volume in B mode 7EDD tables of BPD, GS, CRL, FL, AD, HC, AC, Fetus Age and Fetus Weight Other measurements in M mode		
Zooming	Image magnification in 6 zooms, X0.75, X1, X1.2, X1.5, X2, X3 with scroll-up Depth control		
Image Reversing	Left/Right, Up/Down, Positive/Negative		
Cine Loop	128-frame cine loop function		
Screen Display	Full screen editor for the annotation of Patient's ID, Name, Sex, Age, and Doctor's ID/Name Real-time clock, Probe type, Frequency and Gain information Max. 245mm scanning depth 35 body marks		
Probe Type	Electronic convex array probe (standard)	CA3.5/5.0MHz/ R60 80-element	
	Electronic transvaginal probe (optional)	EV5.0/7.5MHz/ R13 80-element	
Optional Accessories	B/W video printer	PS2 mouse	Trolley
Video Output	PAL-D		
Power Supply	AC110-260V, 50Hz/60Hz		
Net/Gross Weight	9kg/16kg		
Packaging	670L X 470W X 440H mm		

Subject to change without prior notice.

NewTech®

NewTech Industrial Corporation

16859 Stirrup Lane, Minneapolis, MN 55347, U.S.A
 Tel: 1-952-232-0666 Fax: 1-952-400-8947
 http://www.newtech-medical.com
 E-mail: info@newtech-medical.com

